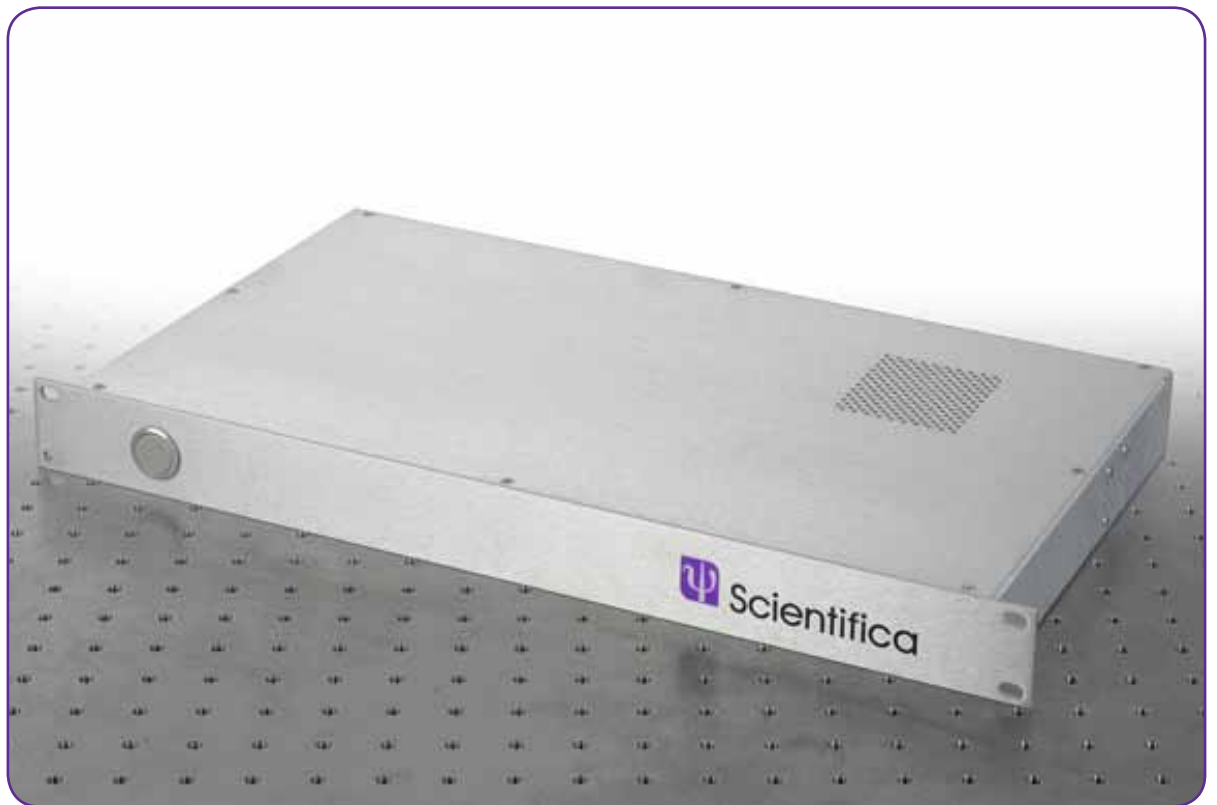


# Scientifica Temperature Control

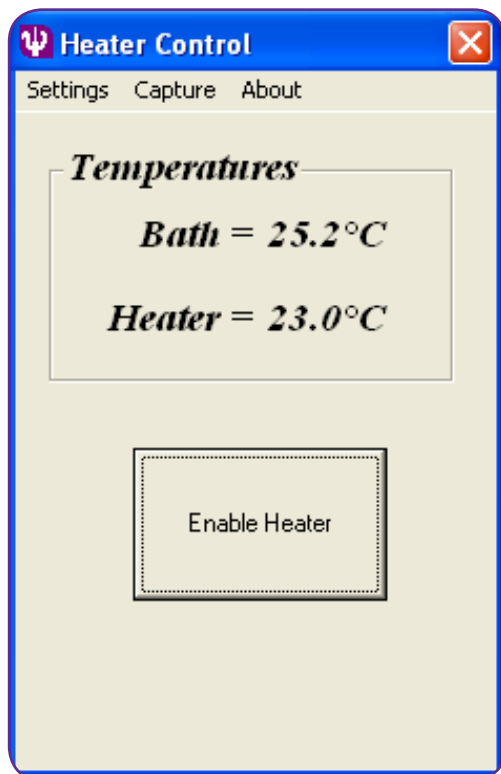


*Control*  
**Productivity through control**

# Temperature Control Overview

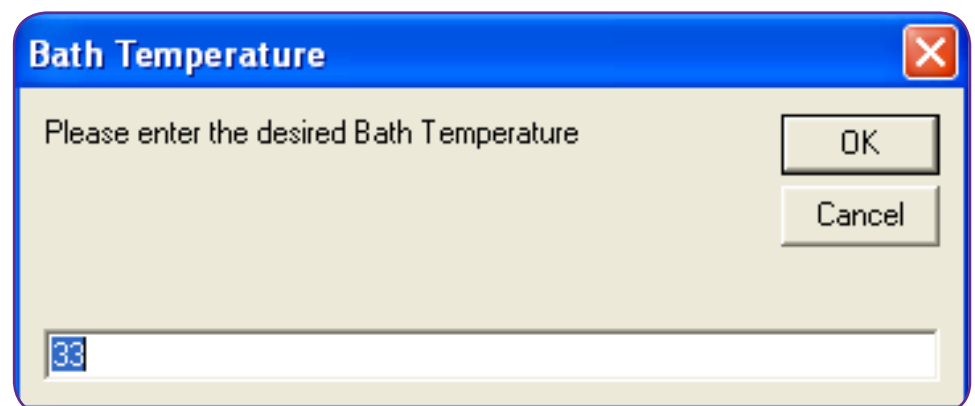
The Scientifica temperature controller enables researchers to heat a perfusion solution to physiological temperatures via an inline heater. Control can be regulated to within 0.1 degrees.

The Scientifica controller uses the included Linlab software, which means a single software interface can be used to control your other Scientifica hardware components alongside temperature options.



## The System Includes

- Ψ The Heating Control Rack
- Ψ Linlab Software
- Ψ The HPT-2A Inline Heater
- Ψ A Temperature Sensor

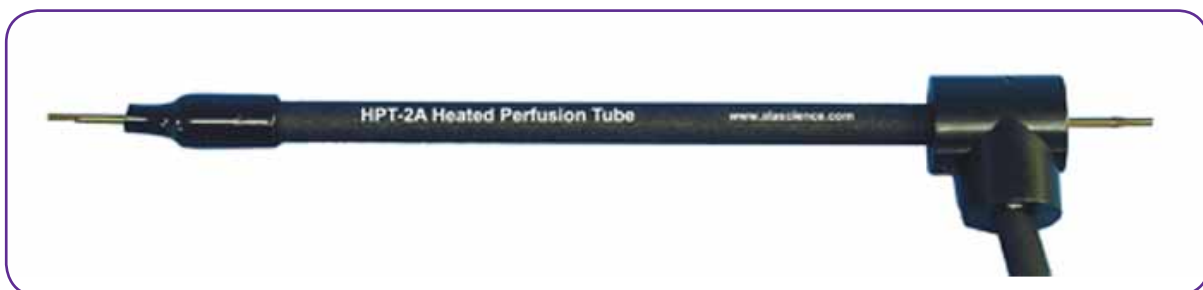
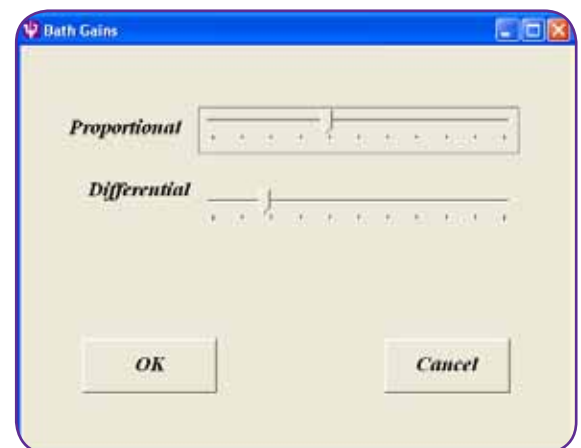
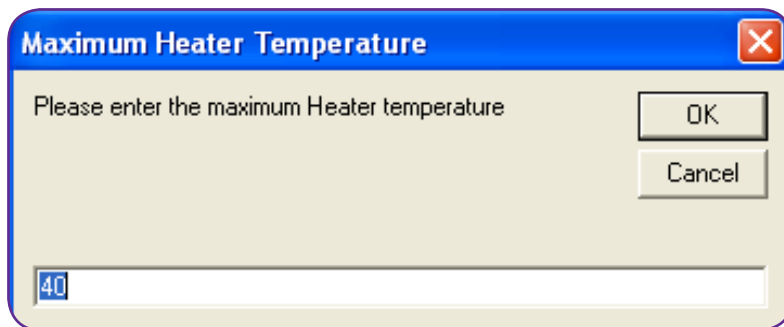


Linlab heating control example

# Software

The simple software control allows the user to set a target temperature for the perfusion solution. A built in sensor, positioned close to the inlet of the perfusion line, gives constant feedback of the actual solution temperature to adjust the heat output of the inline heater.

A maximum heater temperature can be defined as a safety measure to prevent the inline heater from overheating. The response pattern of the heater to the feedback from the bath can be adjusted in the Bath Gains window to allow optimal control.



Heated Perfusion Tube

# Ordering Information

- **SM-4500** - 1U controller unit with PC connection, resistive inline heater with built in temperature sensor and bath sensor for accurate feedback & Scientifica LinLab PC control

## Warranty

*All Scientifica instruments are sold with a two year warranty to give you complete peace of mind. This covers all defects in manufacturing and materials, providing the system is registered with us within 30 days of delivery. An extended warranty can be purchased if desired after this two year period.*

*For more information or to order within the UK and Eire, please contact Scientifica directly. Outside these areas, please contact your local distributor or visit our website.*

SCIENTIFICA LTD,  
Kingfisher Court, Brambleside,  
Bellbrook Industrial Estate,  
Uckfield, East Sussex TN22 1QQ  
United Kingdom

Tel: +44(0)1825 749933  
eMail: [info@scientifica.uk.com](mailto:info@scientifica.uk.com)  
Web: [www.scientifica.uk.com](http://www.scientifica.uk.com)

Your local distributor:

